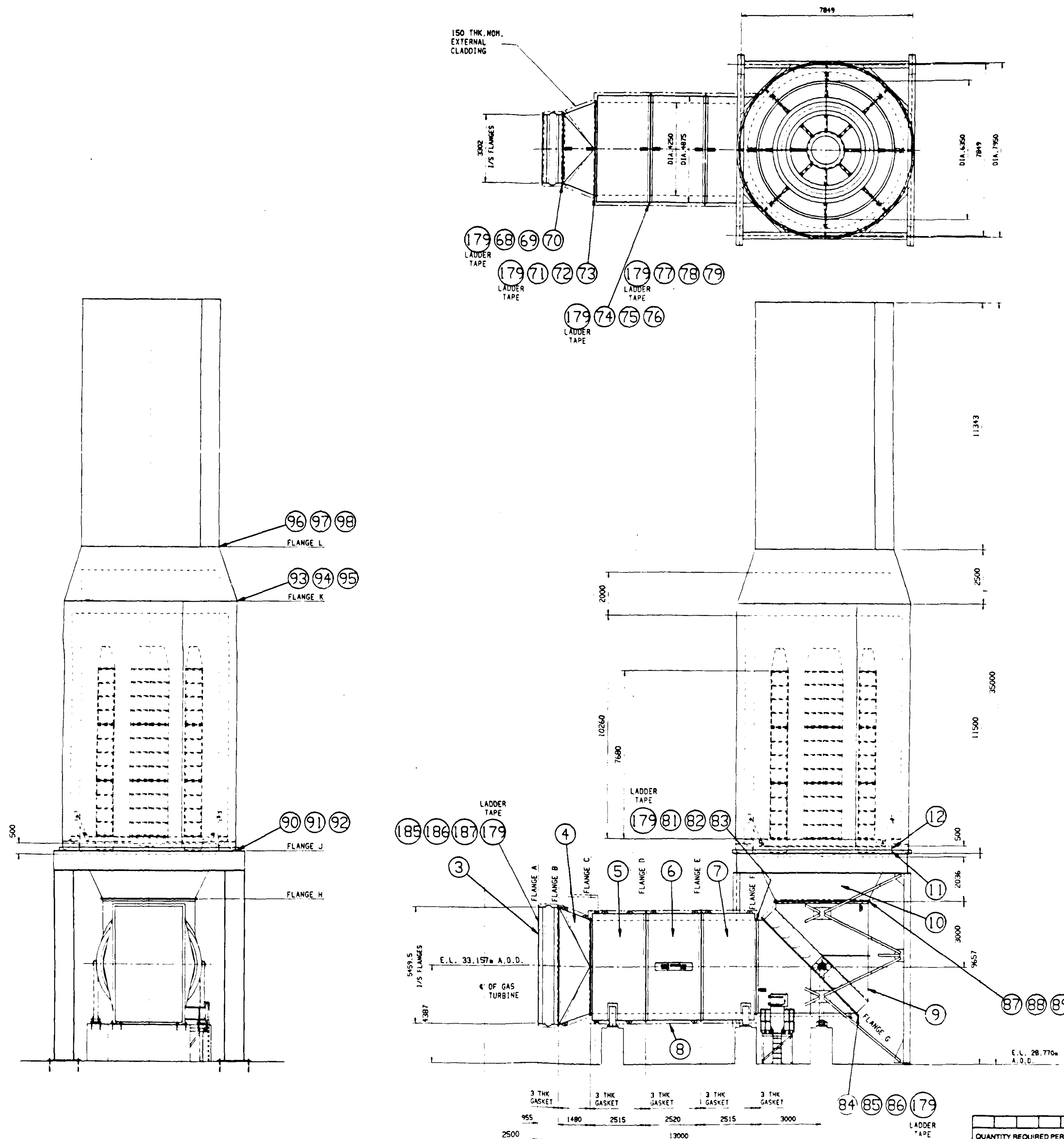


NOTES



HYDRO - ELECTRIC PETERHEAD GENERATING STATION			
CONTRACT NO. 2052600/201	DRAWING NO. 036/13.2/7109	SHEET NO. 01	REV. NO. 07
JOHN BROWN John Brown Engineering Limited Clydebank Dunbartonshire G81 1TA			
J.B.E. ORDER NUMBER: 0998			
J.B.E. DRAWING NUMBER: 0998-7703-029 REV			

NOMENCLATURE		IDENTIFYING NO	MATERIAL/SPECIFICATION
QUANTITY REQUIRED PER DASH NO			
PARTS LIST			
CULLUM DETUNERS LT			
HEAD OFFICE ADAMS CLOSE RELAND GATE INDUSTRIAL ESTATE DERBYSHIRE DEY 100 Tel: 0773 113 Fax: 0773 113001 Telex: 9773 113	LONDON AREA OFFICE NOVA MUTY POTTY HEAT TALP		
TITLE ASSY OF EXHAUST PETERHEAD		SCALE 1:75	JOB NO. DATE
DRG. No. 6419046		SHEET 2 OF	

PREPARED BY CIMCAD	
NEXT ASSEMBLY	USED ON
OPERATIONS	FINISHES
CHECKED	DATE
D MAN	20.2.91
C D	
ENG MAN	20.2.91

CLADDING ADDED TO TRANSITION AND EXPANSION JOINT. M.C. SANDERS. 30.01.1991.	28770 LEVEL WAS 28700. 4387 WAS 4457. GK 17/12/90	LADDER TAPE LOCATIONS CORRECTED GK 8/11/90	REV BLOCK ON J.B.E. LOGO NOW REV D MAT 21/9/90	FLANGE A BOLTS ADDED. GK 6/8/90	EL. SHOWN. DIM WAS 5324.6 NOW 5459.5 DIM 3302 ADDED M.A.T. 29/6/90
---	---	--	--	---------------------------------	--

INCHES (TENTHS)

PHOTOGRAPHIC SCALE

0 10 20 30 40 50 60 70 80 90 100

MILLIMETRES